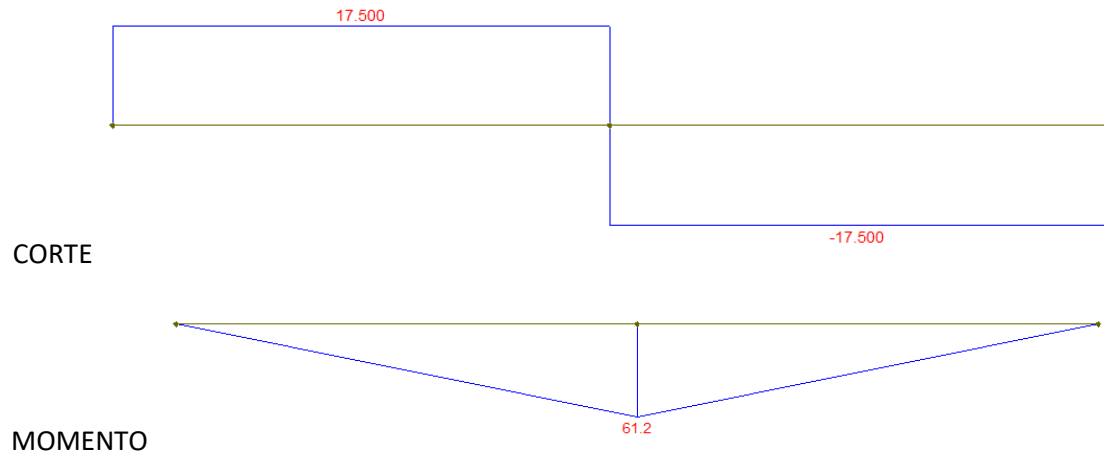
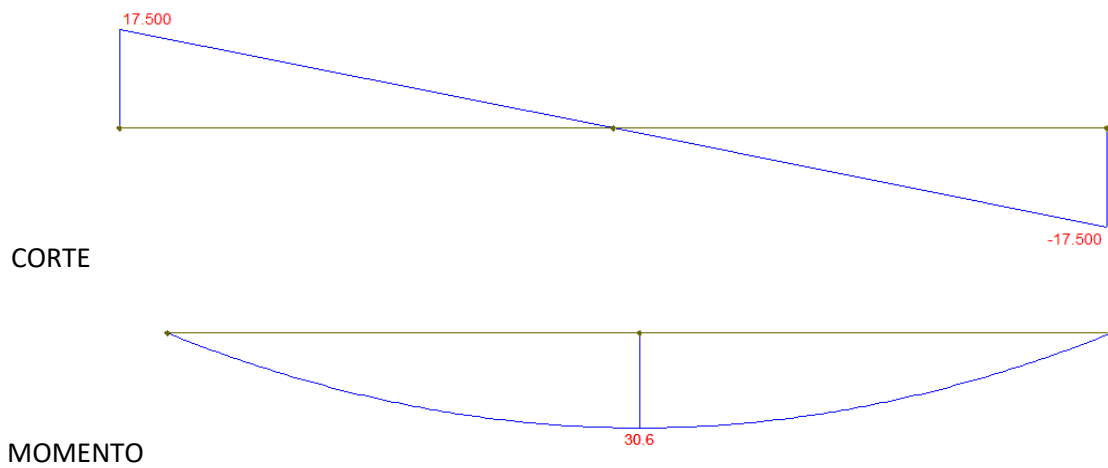


Convención de signos positiva

1. a)

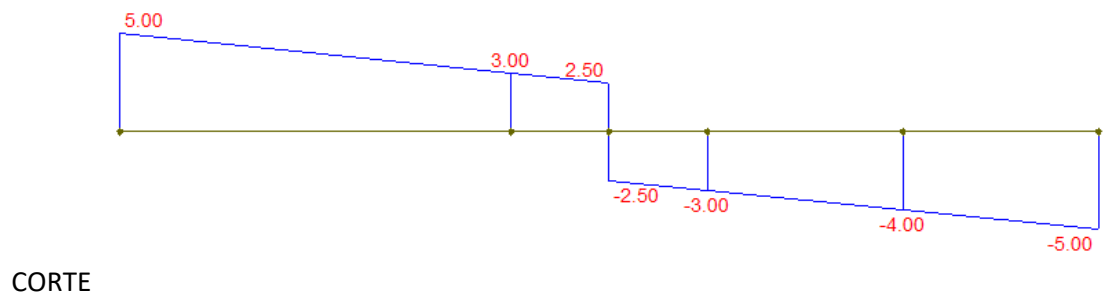


b)

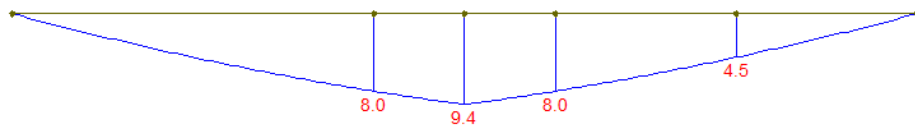


c) Tiene 4 condiciones de vínculo, es hiperestática.

d)

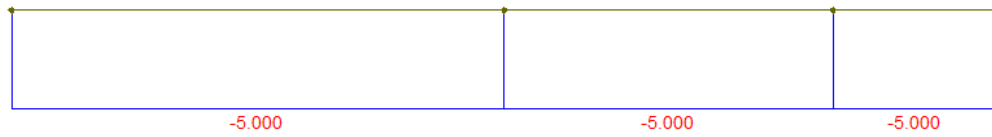


MOMENTO

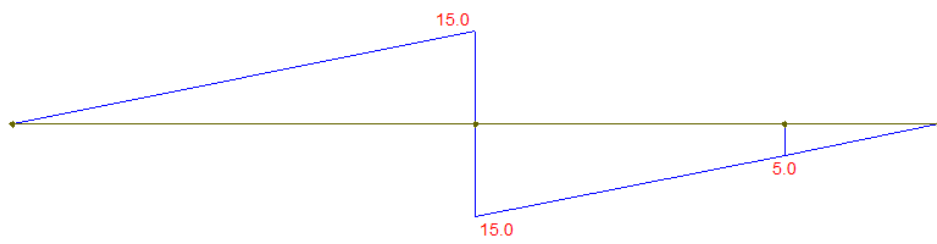


e)

CORTE



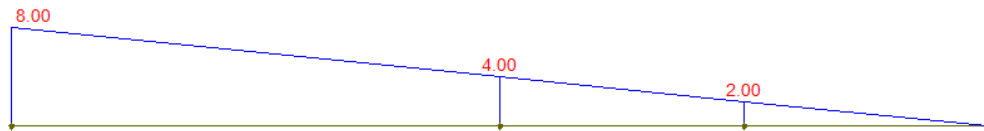
MOMENTO



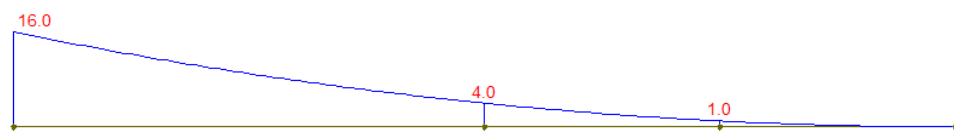
f) La dirección de los tres vínculos simples son paralelas, es hipostático.

g)

CORTE

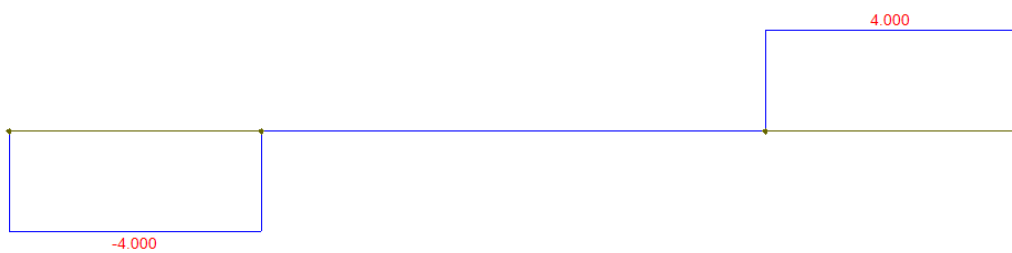


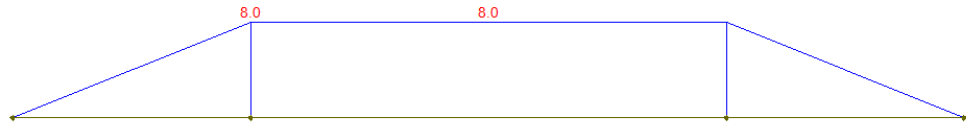
MOMENTO



h)

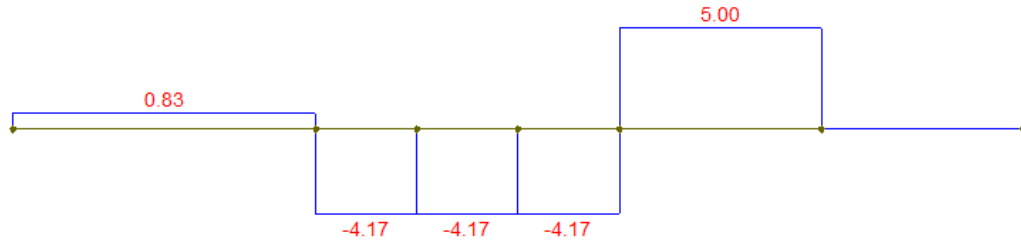
CORTE



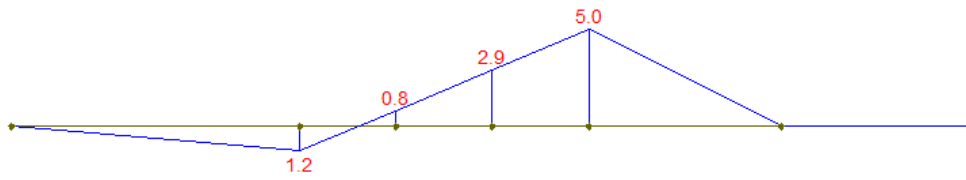


MOMENTO

i)

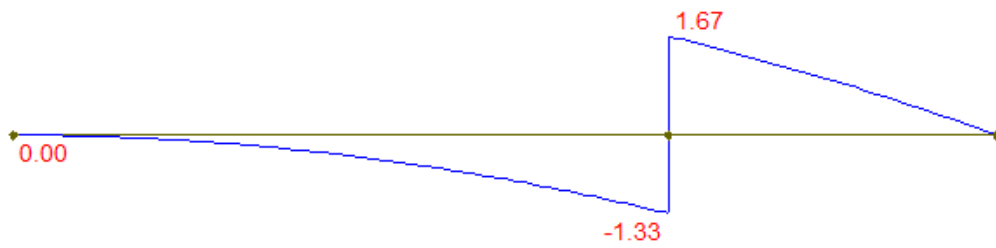


CORTE

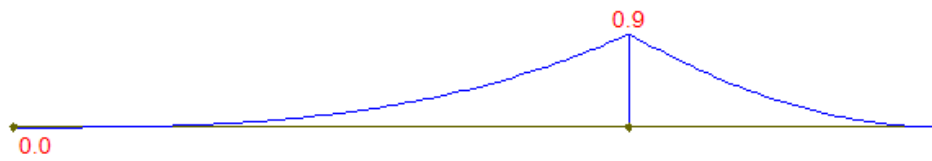


MOMENTO

2. a)

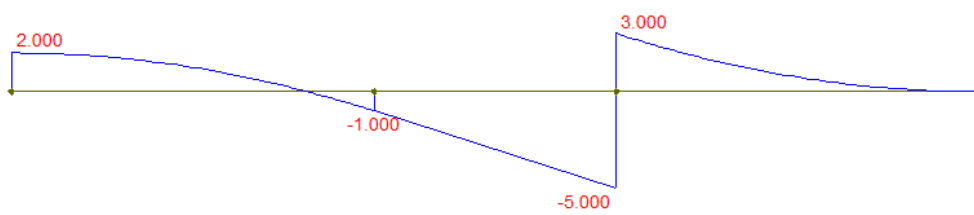


CORTE

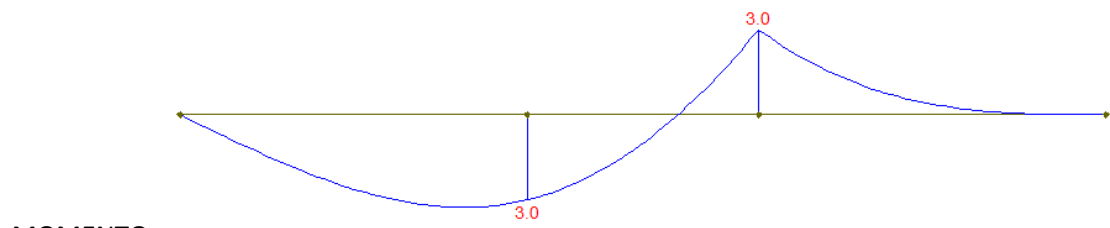


MOMENTO

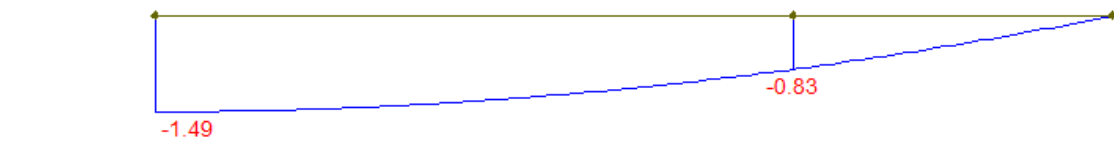
b)



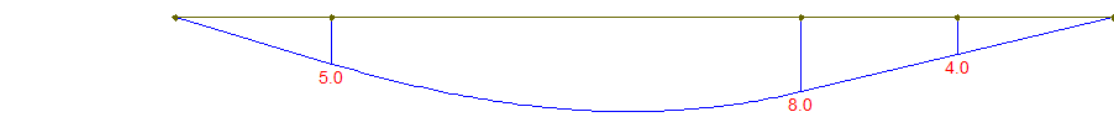
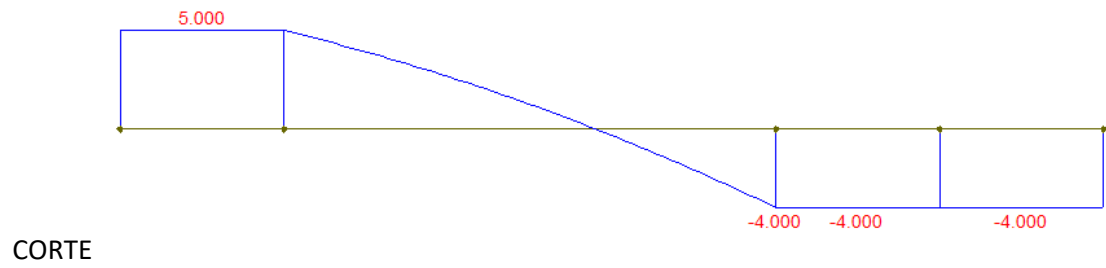
CORTE



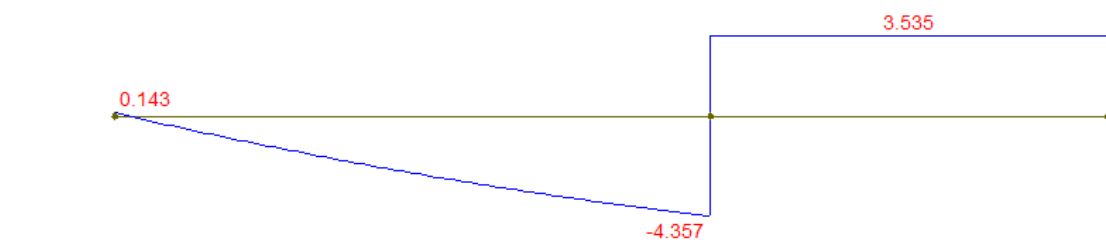
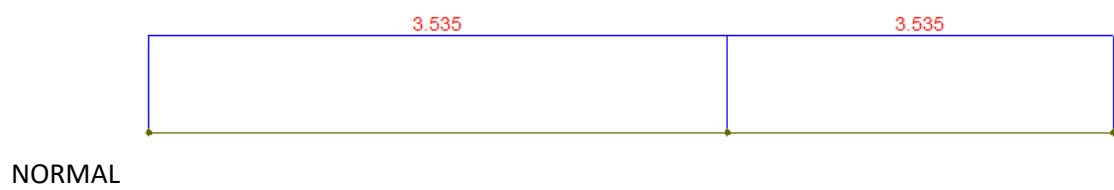
c)

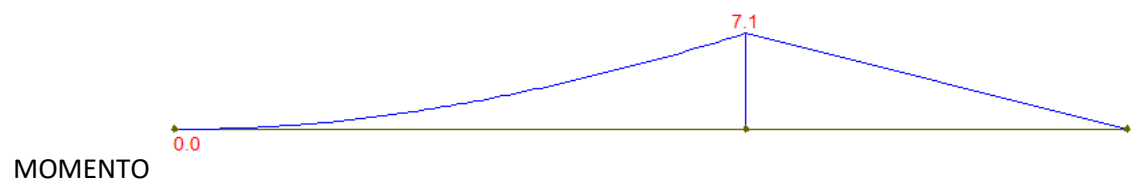


d)

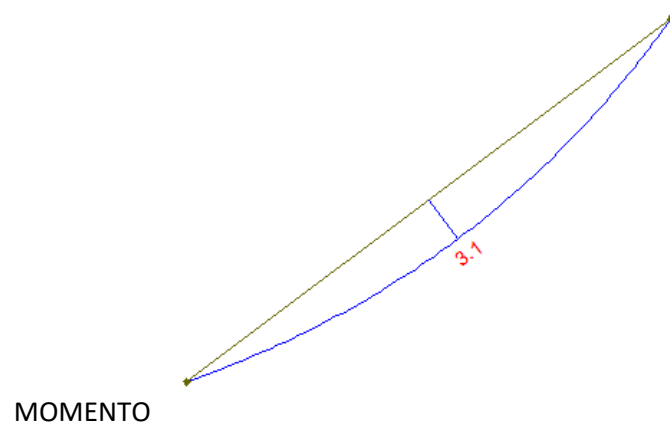
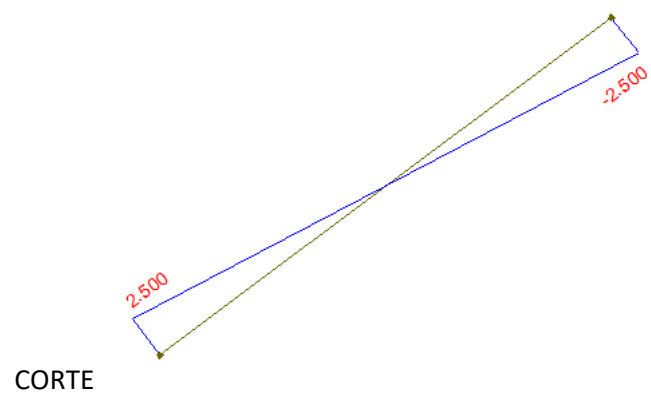
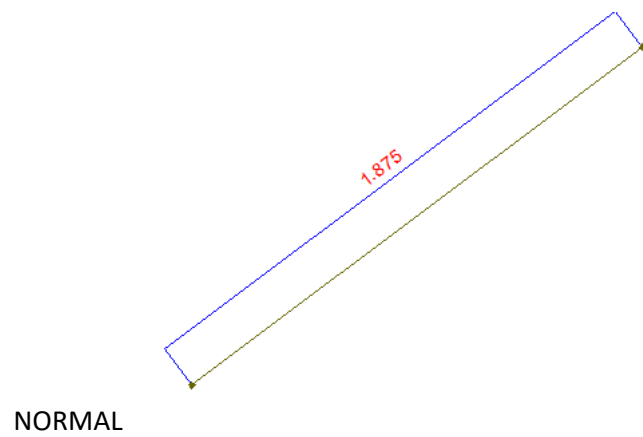


e)

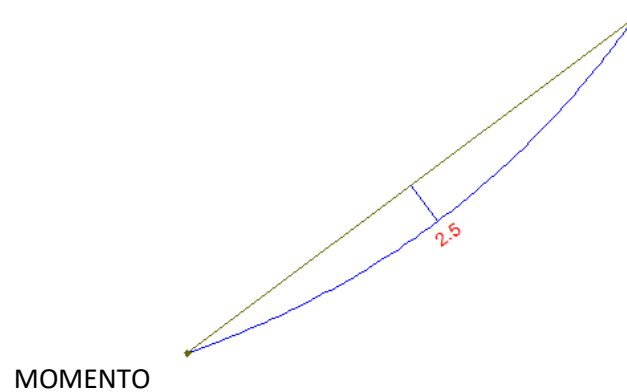
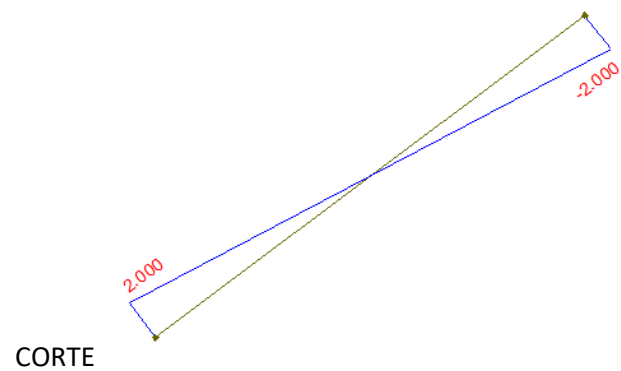
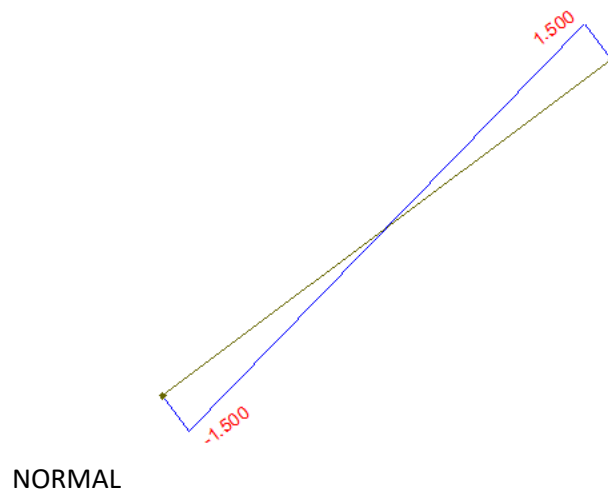




f)



g)



3.

Errores en a:

-Debe haber momento máximo donde el corte pasa por 0.

-En el tercer tramo el corte debe ser 0 (No hay cargas).

Errores en b:

-Tramos 1 y 2 de corte deben ser constantes (Solo hay cargas puntuales).

-Al final del tercer tramo el corte no puede tener un salto (No hay carga puntual aplicada).