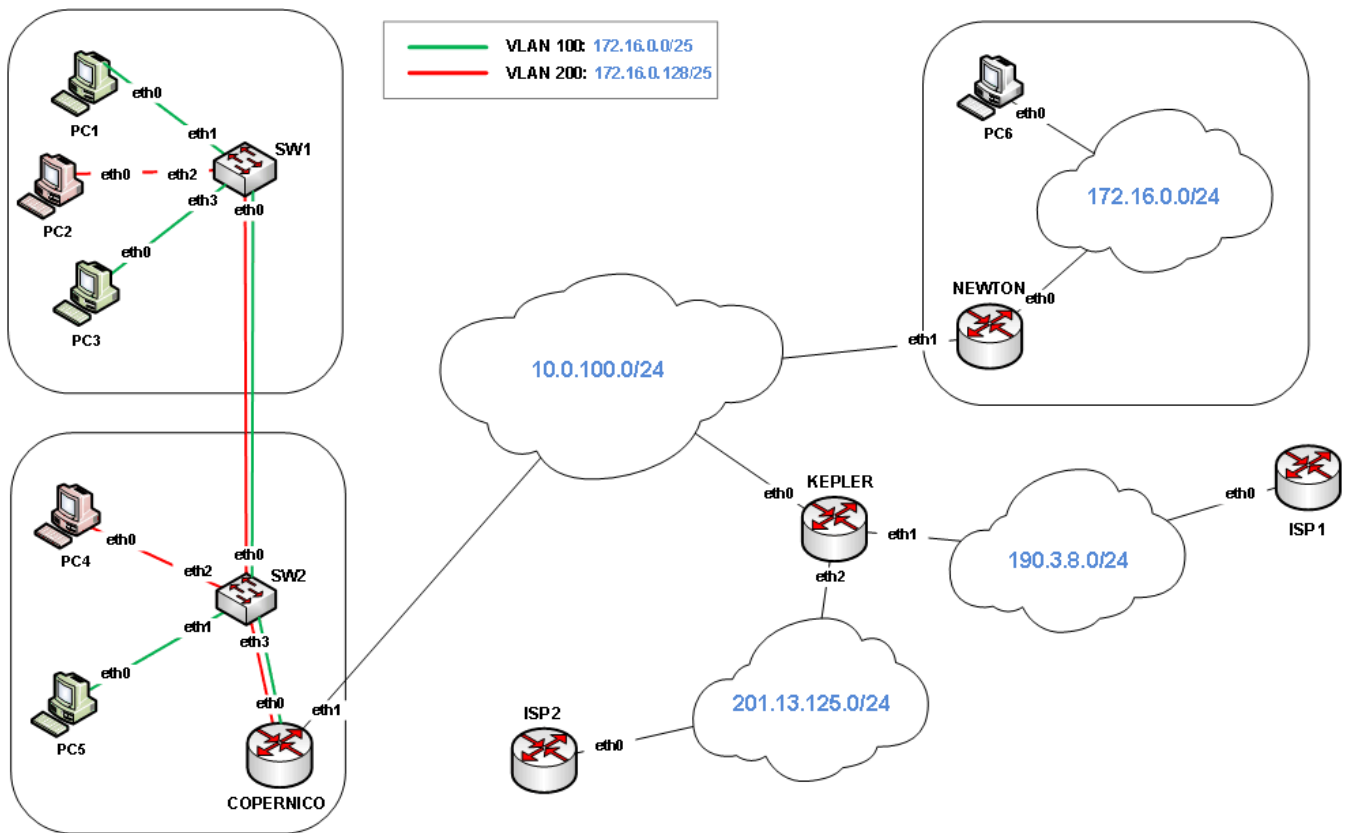


# Laboratorio 3

## Redes y Teleprocesamiento



### Hosts

PC1 |

```
ip link set eth0 up
ip address add 172.16.0.2/25 dev eth0
ip route add default via 172.16.0.1
```

PC3 |

```
ip link set eth0 up
ip address add 172.16.0.3/25 dev eth0
ip route add default via 172.16.0.1
```

PC5 |

```
ip link set eth0 up
ip address add 172.16.0.4/25 dev eth0
ip route add default via 172.16.0.1
```

PC2 |

```
ip link set eth0 up
ip address add 172.16.0.130/25 dev eth0
ip route add default via 172.16.0.129
```

PC4 |

```
ip link set eth0 up
ip address add 172.16.0.131/25 dev eth0
ip route add default via 172.16.0.129
```

PC6 |

```
ip link set eth0 up
ip address add 172.16.0.2/24 dev eth0
ip route add default via 172.16.0.1
```

## Switches

### SW1 |

```
ip link set eth0 up
ip link set eth1 up
ip link set eth2 up
ip link set eth3 up
ip link add eth0.100 link eth0 type vlan id 100
ip link add eth0.200 link eth0 type vlan id 200
ip link set eth0.100 up
ip link set eth0.200 up
ip link add brv100 type bridge
ip link add brv200 type bridge
ip link set brv100 up
ip link set brv200 up
ip link set eth0.100 master brv100
ip link set eth1 master brv100
ip link set eth3 master brv100
ip link set eth0.200 master brv200
ip link set eth2 master brv200
```

### SW2 |

```
ip link set eth0 up
ip link set eth1 up
ip link set eth2 up
ip link set eth3 up
ip link add eth0.100 link eth0 type vlan id 100
ip link add eth0.200 link eth0 type vlan id 200
ip link add eth3.100 link eth3 type vlan id 100
ip link add eth3.200 link eth3 type vlan id 200
ip link set eth0.100 up
ip link set eth0.200 up
ip link set eth3.100 up
ip link set eth3.200 up
ip link add brv100 type bridge
ip link add brv200 type bridge
ip link set brv100 up
ip link set brv200 up
ip link set eth0.100 master brv100
ip link set eth3.100 master brv100
ip link set eth1 master brv100
ip link set eth0.200 master brv200
ip link set eth3.200 master brv200
ip link set eth2 master brv200
```

## Routers

### Copernico |

```
ip link set eth0 up
ip link set eth1 up
ip link add eth0.100 link eth0 type vlan id 100
ip link add eth0.200 link eth0 type vlan id 200
ip link set eth0.100 up
ip link set eth0.200 up
ip address add 172.16.0.1/25 dev eth0.100
ip address add 172.16.0.129/25 dev eth0.200
ip address add 10.0.100.1/24 dev eth1
ip route add default via 10.0.100.2
iptables -A POSTROUTING -t nat -o eth1 -j SNAT →
--to-source 10.0.100.1
```

### Kepler |

```
ip link set eth0 up
ip link set eth1 up
ip link set eth2 up
ip address add 10.0.100.2/24 dev eth0
ip address add 190.3.8.23/24 dev eth1
ip address add 201.13.125.10/24 dev eth2
ip route add default dev eth2
ip route add 172.16.0.0/24 via 10.0.100.3
ip route add default dev eth1 table 1
ip rule add from 10.0.100.1 lookup 1
```

### Newton |

```
ip link set eth0 up
ip link set eth1 up
ip address add 172.16.0.1/24 dev eth0
ip address add 10.0.100.3/24 dev eth1
ip route add default via 10.0.100.2
```